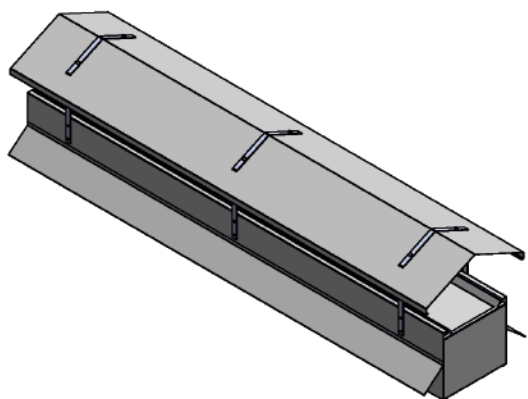




CUMBRERA

Manual de montaje y despieces | Manual assembly

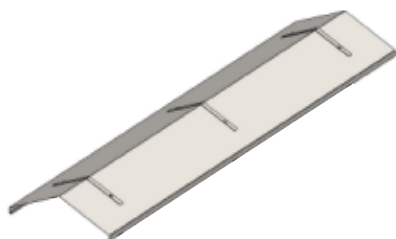




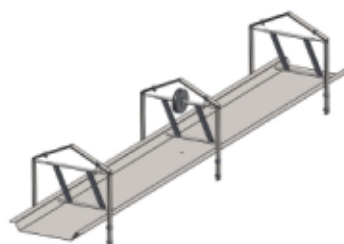
Nuestra Cumbraera incorpora de serie alas laterales soldadas para mayor estanqueidad y solidez. Sobre todo en áreas de abundantes lluvias.
 La base dispone de malla metálica con varillas de refuerzo cada 20cms, para dar más solidez y que la malla quede bien tensa.
 Fabricado en INOX304 de 1mm grosor, cierre hermético y apertura basculante.
 Indicado para regular la ventilación de forma natural

Our "Cumbraera" incorporate on side part flanges welded to give tightness and solidity, especially in areas where it often rains.
 At the base there is a metal flap with reinforcing rods. Every 20cm a welded rod
 Produced in INOX304 of 1mm width, hermetic closure and adjustable opening.
 Indicated to regulate natural ventilation

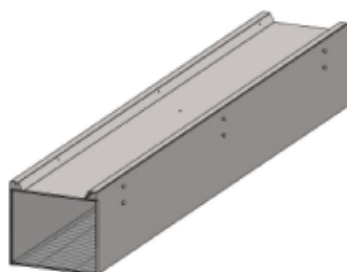
¿Que vas a recibir? | What are you going to receive?



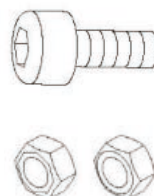
Tapa superior
Top cover



Conjunto bandeja
Tray set

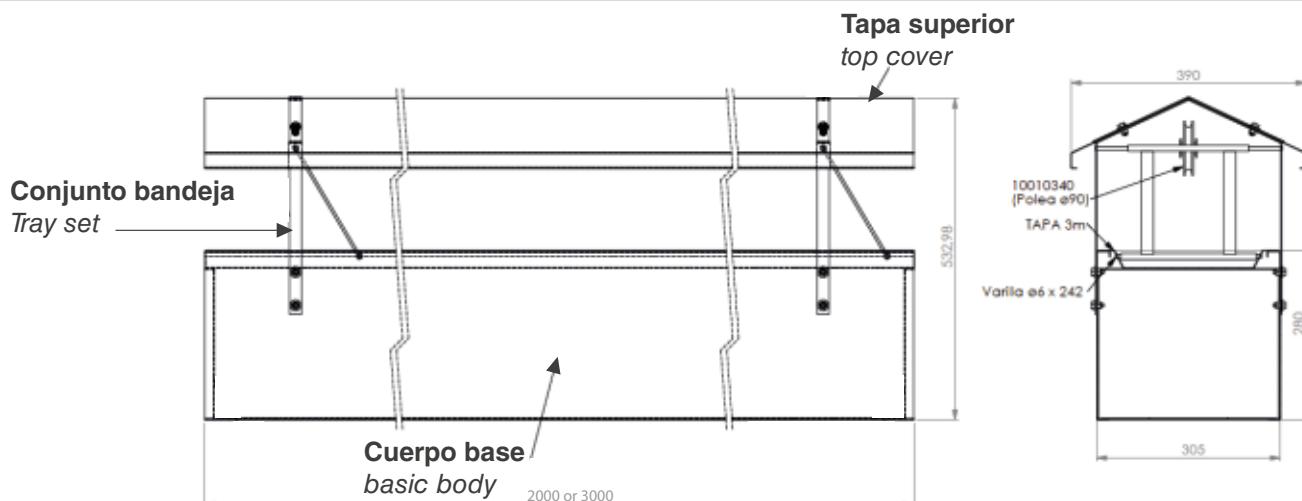


Cuerpo base
Body



Tornillería
Screws

Detalles técnicos | Technical details

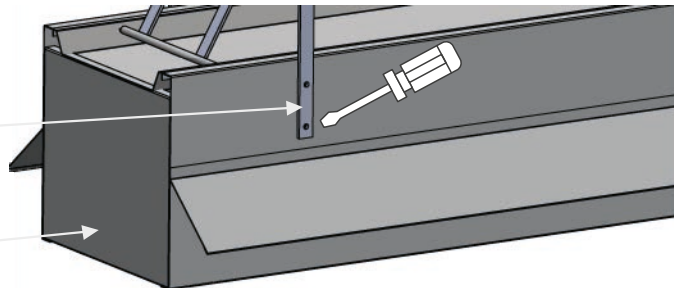


- 1**  **Cuerpo base**
Body  **Conjunto bandeja**
Tray set  **Tornillería**
Screws  **Destornillador**
Screwdriver

Atornilla el conjunto bandeja a la base de la cumbrera | Screw the tray assembly to the body of the ridge.

Conjunto bandeja
Tray set

Cuerpo base
Body

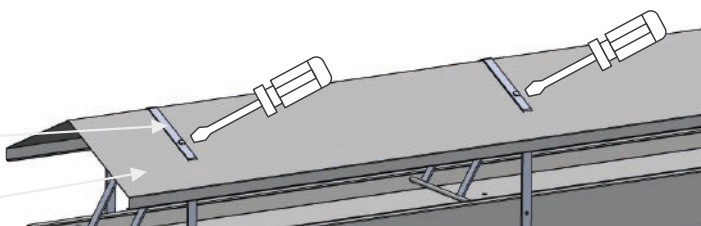


- 2**  **Tapa superior**
Top cover  **Conjunto bandeja**
Tray set  **Tornillería**
Screws  **Destornillador**
Screwdriver

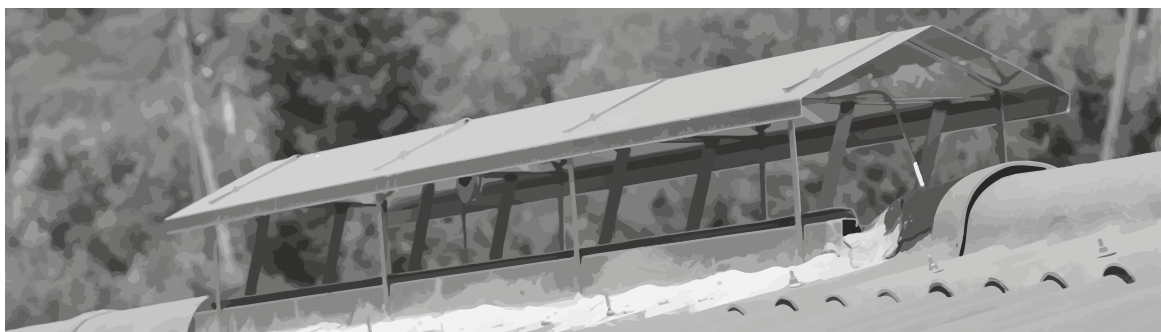
Atornilla la tapa superior a la parte superior del conjunto bandeja | Screws the top cover to the top of the tray assembly.

Conjunto bandeja
Tray set

Tapa superior
Top cover



- 3** Instala la cumbrera en el lugar deseado | Install the ridge cap in the desired location.



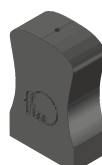
También podría interesarte... | Also, could be interesting...



Torno gatillo
Manual winch



Poleas metálicas
Metallic pulleys



Contrapeso
Polymer counterweight



Cable trenzado INOX
SST flexible cable



fmGrupo | T. +34 93 574 49 35 info@fmgrupo.com
Pol. Ind. Llevant - c/ Llevant 24 Parets del Vallès
(Barcelona - Spain)